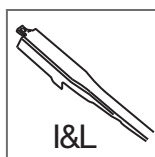
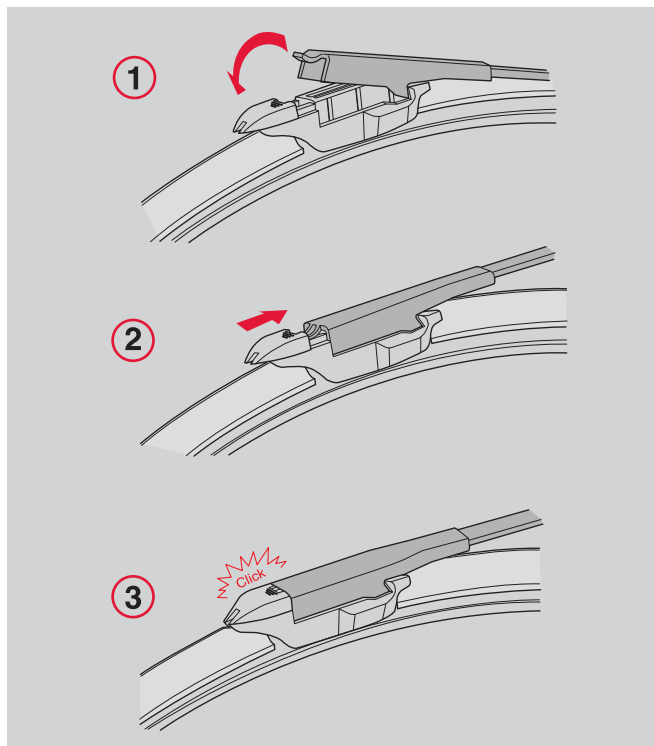


## Superwind Conector I&L

¡Adaptador tipo equipo original I&L!  
I&L = Insert and Lock  
(Insertar y asegurar)








### Diagrama de instalación



### Disponibilidad de adaptadores por medida / Instalación

Medida		No. de Parte
Pulgadas	Milímetros	
16"	410 mm	9XW16IL
18"	460 mm	9XW18IL
19"	480 mm	9XW19IL
20"	510 mm	9XW20IL
21"	530 mm	9XW21IL
22"	560 mm	9XW22IL
24"	610 mm	9XW24IL
26"	660 mm	9XW26IL
28"	710 mm	9XW28IL

### Tipo de Brazo

Vehículo Modelo	Años	Limpiadores Delanteros		
		Piloto (Izq.)	Pasajero (Der.)	Empaque
				
<b>AUDI</b>				
A3	07-09	19"	24"	Ind.
Q7	07-09	22"	26"	Ind.
TT	08-09	21"	22"	Ind.
<b>BMW</b>				
BMW LR3	06-06	21"	21"	Ind.
120 i	06-06	20"	20"	Ind.
130 i	08-09	20"	20"	Ind.
525i A Lujo, Top, F1	08-09	23"	24"	Ind.
550i A Top	06-06	23"	24"	Ind.
550i Serie 5	08-09	22"	24"	Ind.
650i Serie 6	08-09	24"	24"	Ind.
<b>CADILLAC</b>				
Escalade	07-08	21"	22"	Ind.
Escalade EXT	07-08	22"	22"	Ind.
STS	06-06	21"	22"	Ind.
<b>CHEVROLET/GMC</b>				
Cheyene	07-08	22"	22"	Ind.
Sierra	07-08	22"	22"	Ind.
Sierra Denali Pickup	07-08	22"	22"	Ind.
Suburban	07-08	22"	22"	Ind.
Tahoe, LT	07-08	22"	22"	Ind.
Yukon	07-09	22"	22"	Ind.
<b>LAND ROVER</b>				
Land Rover LR2	08-09	20"	24"	Ind.
<b>FORD</b>				
Mustang Shelby	08-09	20"	22"	Ind.
<b>FIAT</b>				
Punto	08-09	16"	26"	Ind.
Stilo Shumager	08-09	21"	21"	Ind.
<b>LINCOLN</b>				
Mks	08-09	20"	26"	Ind.
<b>MERCEDES BENZ</b>				
Clase E, S	06-08	26"	26"	Ind.
Clase ML	06-08	21"	26"	Ind.
B200	07-08	22"	26"	Ind.
ML63	07-08	21"	28"	Ind.
ML500	06-06	21"	28"	Ind.
GL450	07-08	21"	28"	Ind.
R500	06-06	21"	28"	Ind.
SLK 200	07-08	22"	22"	Ind.
Sprinter	08-09	24"	26"	Ind.
<b>PEUGEOT</b>				
307, 307CC, SW	08-09	26"	28"	Ind.
<b>RENAULT</b>				
Koleos	09-09	19"	24"	Ind.
<b>PONTIAC</b>				
G6	07-09	19"	24"	Ind.
<b>SAAB</b>				
93	08-09	22"	22"	Ind.
<b>SMART</b>				
Smart	07-08	21"	22"	Ind.
Forfour	07-08	21"	22"	Ind.
<b>SEAT</b>				
Leon Cupra	07-09	26"	26"	Ind.
Leon	07-09	26"	26"	Ind.
Toledo	07-08	26"	26"	Ind.
<b>VOLVO</b>				
S40	05-08	20"	26"	Ind.
S60	03-09	22"	24"	Ind.
XC90	08-09	22"	24"	Ind.
<b>PONTIAC</b>				
G6	07-09	21"	24"	Ind.
<b>JAGUAR</b>				
XF	08-09	19"	22"	Ind.